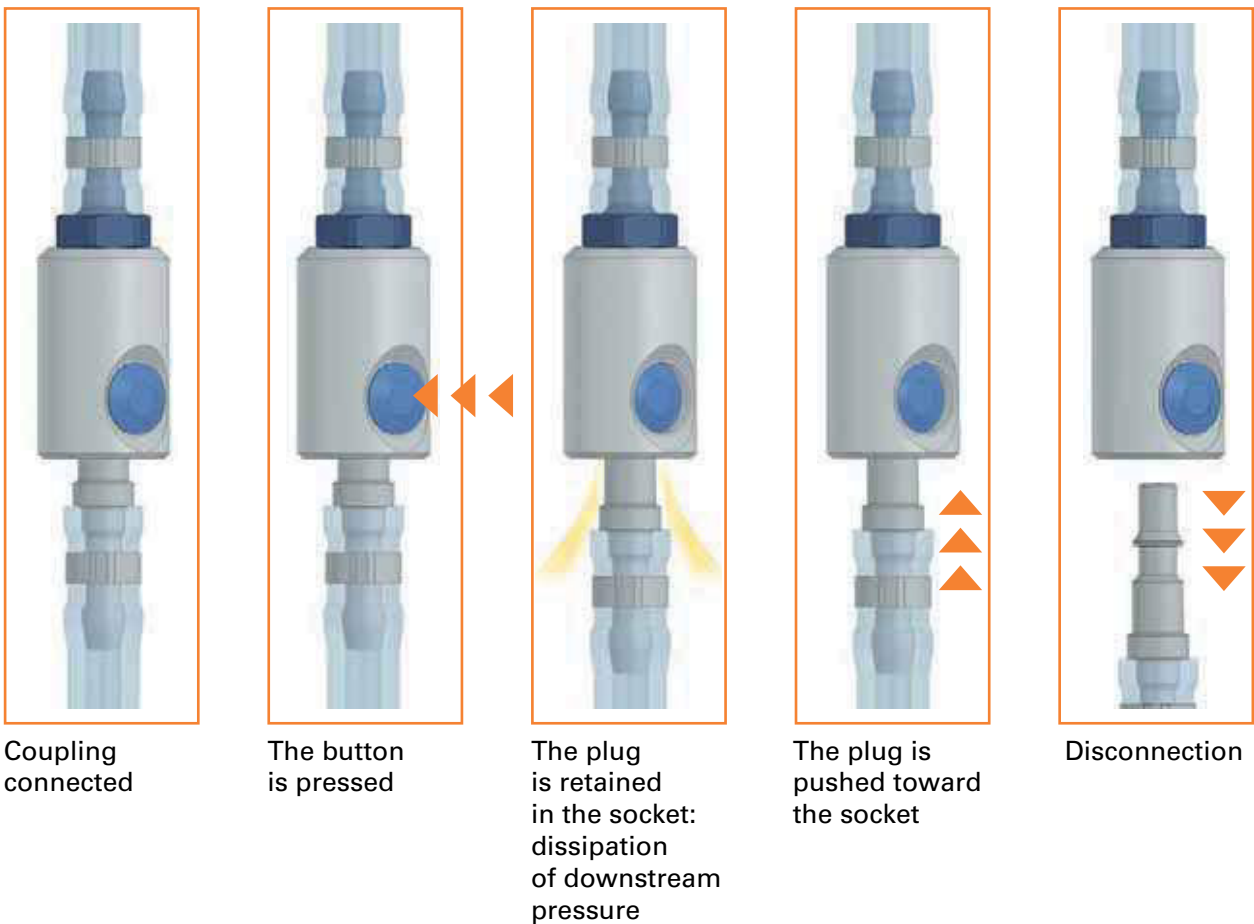




# Safeline Series Operation Guidelines

## Elimination of hose whip with two distinct movements:

- 1 Button pressed ▶ Dissipation of downstream pressure: the plug is retained in the socket
- 2 Plug pushed into the socket ▶ Disconnection



**Recommendation applicable to all profiles**

Use with vibrating tools:  
A flexible hose at least 300 mm long between the tool and the quick coupling is recommended.

# Safeline Series

## ISO 6150 B GD10500 Safety-Type Quick-Release

FLUID TRANSFER  
AND HYDRAULIC

PNEUMATIC

SPECIAL APPLICATIONS

DIAGNOSTIC

AGRICULTURE

REFRIGERANT



Eaton's Safeline Series is an Industrial Interchange pneumatic coupling with push button safety feature designed for use with compressed air. Two-step disconnect procedure shuts off air supply and releases downstream air pressure before plug can be removed from socket/female, which prevents hose whip.

### Product Features

- Safe and easy to connect and disconnect
- Light weight, compact ergonomic design
- Accepts 1/4" ISO 6150 Series B and A-A-59439 plugs/males
- Accepts all US industrial plugs/males
- Standard body material: Aluminum
- Standard seal material: Buna-N

### Physical Characteristics

Body Size	Nominal Flow Diameter (mm)	Max. Operating Pressure Connected or Disconnected		Air Flow Rate* Δp 0.6 bar/8.7 psi**		Δp 1 bar/14.5 psi***		Working Temperature	
		(bar)	(psi)	(lpm)	(gpm)	(lpm)	(gpm)	°C	°F
1/4	5.5	16	232	525	139	660	174	-20° +100°	-4° +212°

\*Indicated values refer to an inlet pressure of 6 bar / 87 psi.

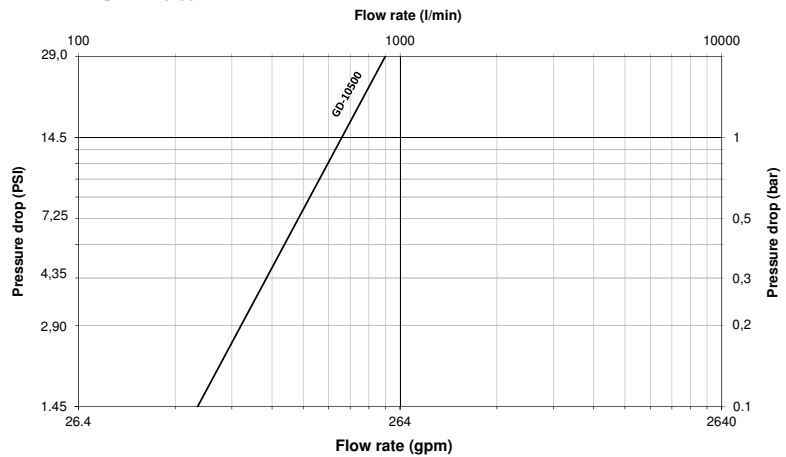
\*\*This flow rate allows the optimum output from a pneumatic tool.

\*\*\* This flow rate is the maximum recommended for a suitable output from a pneumatic tool. For applications needing higher flow rates, it is recommended to select a larger size coupling.

### Applications & Markets

- General Pneumatics
- Air Tools
- Industrial Plants
- Maintenance and Repair

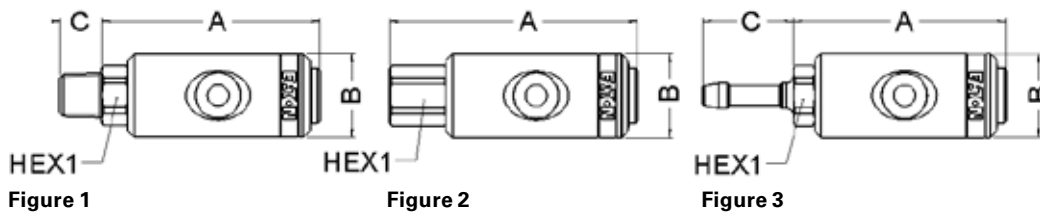
### Flow Data



Air flow-rate at 6 bar (87 psi)

# Safeline Series

## ISO 6150 B GD10500 Safety-Type Quick-Release



### Sockets (Female)

Part Number	Body Size	Port Size	Thread or Hose Diam.	Type	Fig.	Dimensions			Hex1 (in)	Hex2 (in)	A (mm)	B (mm)	C (mm)	Hex1 Weight		
						A (in)	B (in)	C (in)						(lbs)	(g)	
GD1053615		¼	¼	Male BSPP	1	2.57	1.02	0.47	0.75		65.3	26.0	12.0	19	0.24	110
GD1053614		¼	¼	Male BSPT	1	2.65	1.02	0.51	0.67		67.3	26.0	13.0	17	0.24	109
GD1053641		¼	¼	Male NPT	1	2.65	1.02	0.59	0.67		67.2	26.0	15.1	17	0.24	110
GD1053639		¾	¾	Male BSPP	1	2.61	1.02	0.47	0.87		66.3	26.0	12.0	22	0.27	124
GD1053638		¾	¾	Male BSPT	1	2.65	1.02	0.57	0.67		67.3	26.0	14.5	17	0.26	117
GD1053683		¾	¾	Male NPT	1	2.62	1.02	0.60	0.75		66.5	26.0	15.3	19	0.27	121
GD1053613		½	½	Male BSPP	1	2.69	1.02	0.55	1.06		68.3	26.0	14.0	27	0.33	148
GD1053612		½	½	Male BSPT	1	2.61	1.02	0.67	0.87		66.3	26.0	17.0	22	0.34	156
GD1053621		½	½	Male NPT	1	2.61	1.02	0.79	0.87		66.3	26.0	20.0	22	0.30	137
GD1052614	¼	¼	¼	Female BSPP	2	2.33	1.02	0.00	0.67		76.8	26.0		17	0.24	109
GD1052641		¼	¼	Female NPT	2	2.33	1.02	0.00	0.67		76.3	26.0		17	0.24	109
GD1052638		¾	¾	Female BSPP	2	3.14	1.02	0.00	0.87		79.8	26.0		22	0.29	132
GD1052683		¾	¾	Female NPT	2	3.08	1.02	0.00	0.87		78.3	26.0		22	0.29	132
GD1052612		½	½	Female BSPP	2	3.30	1.02	0.00	1.06		83.8	26.0		27	0.34	155
GD1052621		½	½	Female NPT	2	3.24	1.02	0.00	1.06		82.3	26.0		27	0.35	157
GD1055667		-	6 mm	Reusable Hose Fit.	3	2.59	1.02	1.10	0.67		65.8	26.0	28.0	17	0.23	106
GD1055678		-	7 mm	Reusable Hose Fit.	3	2.57	1.02	1.10	0.67		65.8	26.0	28.0	17	0.24	107
GD1055689		-	8 mm	Reusable Hose Fit.	3	2.33	1.02	1.10	0.67		65.8	26.0	28.0	17	0.24	107
GD1055690		-	9 mm	Reusable Hose Fit.	3	2.33	1.02	1.10	0.67		65.8	26.0	28.0	17	0.24	108
GD1055601		-	10 mm	Reusable Hose Fit.	3	2.33	1.02	1.10	0.67		65.8	26.0	28.0	17	0.25	112

To obtain connected length of coupling add Dimensions A or A+C (Fig. 1, 2, 3) and D or D+E (Fig. 4, 5, 6, 7, 8) together and subtract 23 mm (0.91 in).

\*Alternative end connections available upon request.

FLUID TRANSFER  
AND HYDRAULIC

PNEUMATIC

SPECIAL APPLICATIONS

DIAGNOSTIC

AGRICULTURE

REFRIGERANT

# Safeline Series

## ISO 6150 B GD10500 Safety-Type Quick-Release

FLUID TRANSFER  
AND HYDRAULIC

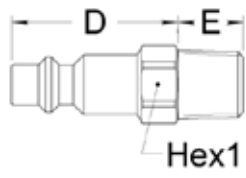


Figure 4

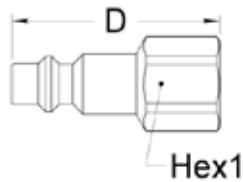


Figure 5

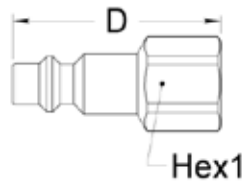


Figure 6

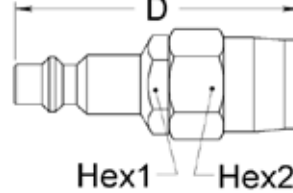


Figure 7

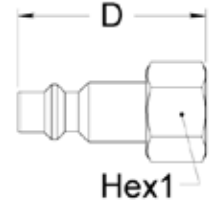


Figure 8

### Plugs (Male)

Part Number	Body Size	Port Size	Thread or Hose Diam. Type	Dimensions			Hex1 (in)	Hex2 (in)	D (mm)	E (mm)	F (mm)	Hex1 (mm)	Hex2 (mm)	Weight	
				Fig.	D (in)	E (in)								F (in)	(lbs)
GA0066318		1/8	1/8-28 Male BSPT	4	1.260	0.354	0.472		32	9		12		0.04189	19
GA0066314		1/4	1/4-19 Male BSPT	4	1.260	0.512	0.551		32	13		14		0.06	25
10		1/4	1/4-18 Male NPT	4	1.220	0.551	0.591		31	14		15		0.06	25
GA0066338		3/8	3/8-19 Male BSPT	4	1.260	0.591	0.669		32	15		17		0.08	38
GA0066345		M14	M14x125 Male Metric	4	1.260	0.512	0.551		32	13		14		0.06	26
GA0066214		1/4	1/4-19 Female BSPP	5	1.732		0.669		44			17		0.07	30
11		1/4	1/4-18 Female NPT	5	1.634		0.709		41.5			18		0.07	30
GA0066238		3/8	3/8-19 Female BSPP	5	1.732		0.827		44			21		0.08	37
GA0066245		M14	M14x125 Female Metric	5	1.732		0.669		44			17		0.06	25
GA0066248	1/4	-	M14x125 Female Metric	5	1.732		0.551		44			14		0.05	24
GA0066767		-	6mm Hose Tail	6	1.102	1.024	0.551		28	26	14			0.04	19
GA0066778		-	7mm Hose Tail	6	1.102	1.024	0.551		28	26	14			0.04	20
GA0066789		-	8mm Hose Tail	6	1.102	1.024	0.551		28	26	14			0.04	20
GA0066790		-	9mm Hose Tail	6	1.102	1.024	0.551		28	26	14			0.04	20
GA0066701		-	10mm Hose Tail	6	1.102	1.024	0.551		28	26	14			0.05	22
GA0066174		-	7x14 mm Reusable Hose Fit.	7	2.224		0.630	0.748	56.5			16	19	0.12	56
GA0066184		-	8x14 mm Reusable Hose Fit.	7	2.224		0.630	0.748	56.5			16	19	0.13	57
GA0066185		-	8x15 mm Reusable Hose Fit.	7	2.224		0.630	0.748	56.5			16	19	0.12	53
GA0066196		-	9x16 mm Reusable Hose Fit.	7	2.224		0.630	0.748	56.5			16	19	0.11	51
GA0066814		1/4	1/4-19 Female BSPP Swivel	8	1.496		0.669		38			17		0.06	26
GA0066845		M14	M14x125 Female Metric Swivel	8	1.496		0.669		38			17		0.06	26

To obtain connected length of coupling add Dimensions A or A+C (Fig. 1, 2, 3) and D or D+E (Fig. 4, 5, 6, 7, 8) together and subtract 23 mm (0,91 in).

\*Alternative end connections available upon request.

PNEUMATIC

SPECIAL APPLICATIONS

DIAGNOSTIC

AGRICULTURE

REFRIGERANT

# Safeline Series

## ISO 6150 B ID10900 Safety-Type Quick-Release



Eaton Gromelle™ ID10900 Series is a single shut-off compressed air coupling that interchanges with ISO 6150 C Standards requirements. Nominal diameter is 8 mm. Thanks to a distinct two-movement action, our couplings guarantee worker safety at disconnection by eliminating the “whiplash” effect. It is a must-have for safe air applications.

### Product Features

- One-hand push-to-connect
- Automatic button for disconnection
- Meets safety standard ISO 4414
- Single shut-off valving
- Good flow capacity
- Wide selection of end connections
- Standard seal material: NBR (Nitrile)
- Standard body material (Female): Aluminum
- Standard body material (Male): Zinc plated steel

### Physical Characteristics

Body Size	Nominal Flow Diameter (mm)	Max. Operating Pressure Connected or Disconnected		Air Flow Rate* $\Delta p$ 0.6 bar/8.7 psi**				Working Temperature	
		(bar)	(psi)	(lpm)	(gpm)	(lpm)	(gpm)	°C	°F
3/8"	8	16	232	1,590	420	2,000	528	-20° +100°	-4° +212°

\*Indicated values refer to an inlet pressure of 6 bar / 87 psi.

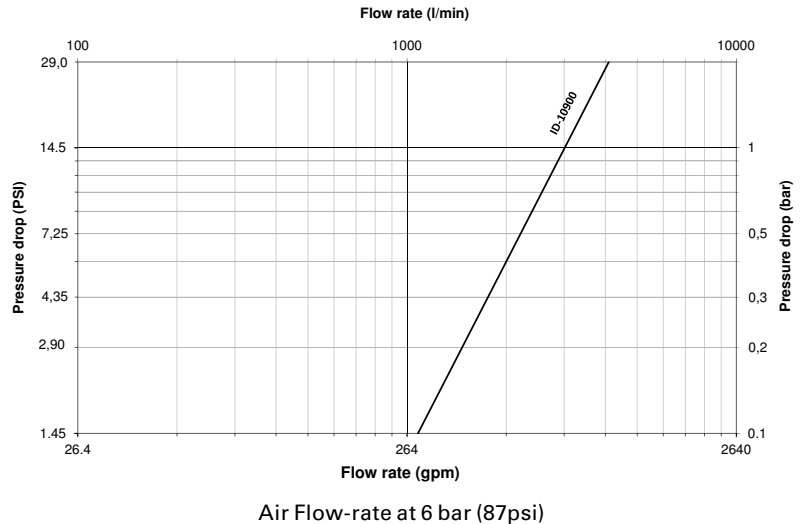
\*\*This flow rate allows the optimum output from a pneumatic tool.

\*\* This flow rate is the maximum recommended for a suitable output from a pneumatic tool. For applications needing higher flow rates, it is recommended to select a larger size coupling.

### Applications & Markets

- General Pneumatics
- Air Tools

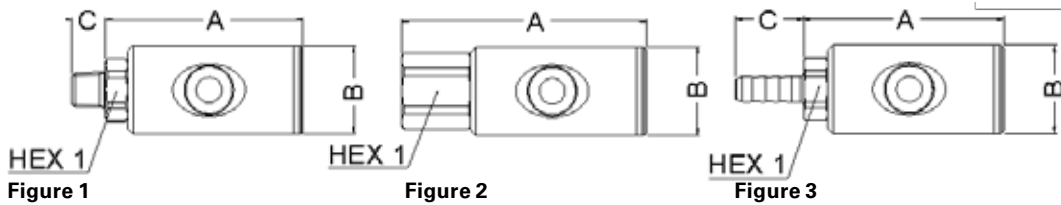
### Flow Data



# Safeline Series

## ISO 6150 B ID10900 Safety-Type Quick-Release

FLUID TRANSFER  
AND HYDRAULIC



PNEUMATIC

SPECIAL APPLICATIONS

### Sockets (Female)

Part Number	Body Size	Port Size	Thread or Hose Diam.	Type	Fig.	Dimensions									
						A (in)	B (in)	C (in)	Hex1 (in)	A (mm)	B (mm)	C (mm)	Hex1 (mm)	Weight (lbs)	Weight (g)
ID1096015		¼	¼	Male BSPP	1	3.0	1.3	0.5	0.87	76.2	34	11.9	22	0.47	214
ID1096014		¼	¼	Male BSPT	1	3.0	1.3	0.5	0.87	76.1	34	13	22	0.47	213
ID1096041		¼	¼	Male NPT	1	3.0	1.3	0.5	0.87	76	34	13	22	0.47	213
ID1096039		¾	¾	Male BSPP	1	3.0	1.3	0.5	0.87	76.20	34	11.9	22	0.48	218
ID1096038		¾	¾	Male BSPT	1	3.0	1.3	0.6	0.87	76.1	34	15	22	0.48	219
ID1096083		¾	¾	Male NPT	1	3.0	1.3	0.6	0.87	76.1	34	15	22	0.48	219
ID1096013		½	½	Male BSPP	1	3.0	1.3	0.5	1.06	76.2	34	13.9	27	0.52	238
ID1096012		½	½	Male BSPT	1	3.0	1.3	0.7	0.87	76.1	34	17	22	0.51	233
ID1096021		½	½	Male NPT	1	3.0	1.3	0.7	0.87	76.1	34	17	22	0.51	233
ID1097014	¾	¼	¼	Female BSPP	2	3.5	1.3	-	0.87	88.1	34	-	22	0.51	233
ID1097041		¼	¼	Female NPT	2	3.5	1.3	-	0.87	88.10	34	-	22	0.51	233
ID1097038		¾	¾	Female BSPP	2	3.6	1.3	-	0.87	90.60	34	-	22	0.51	232
ID1097083		¾	¾	Female NPT	2	3.6	1.3	-	0.87	90.6	34	-	22	0.51	232
ID1097012		½	½	Female BSPP	2	3.7	1.3	-	1.06	94.1	34	-	27	0.59	267
ID1097021		½	½	Female NPT	2	3.7	1.3	-	1.06	94.1	34	-	27	0.59	269
ID1095678		-	7 mm	Hose Tail	3	3.0	1.3	1.1	0.87	77.1	34	28	22	0.47	215
ID1095689		-	8 mm	Hose Tail	3	3.0	1.3	1.1	0.87	77.1	34	28	22	0.48	216
ID1095690		-	9 mm	Hose Tail	3	3.0	1.3	1.1	0.87	77.1	34	28	22	0.48	218
ID1095601		-	10 mm	Hose Tail	3	3.0	1.3	1.1	0.87	77.1	34	28	22	0.48	219

To obtain connected length of coupling add dimensions A or A+C (Fig. 1, 2, 3) and D or D+E (Fig. 4, 5, 6) together and subtract 25,6 mm (1 in.).

\*Alternative end connections available upon request.

DIAGNOSTIC

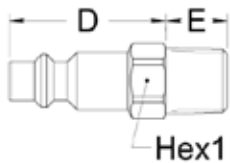


Figure 4

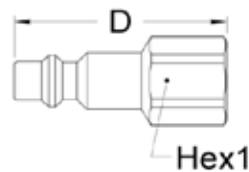


Figure 5

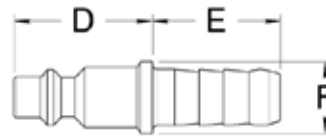


Figure 6

### Plugs (Male)

Part Number	Body Size	Port Size	Thread or Hose Diam.	Type	Fig.	Dimensions									
						D (in)	E (in)	F (in)	Hex1 (in)	D (mm)	E (mm)	F (mm)	Hex1 (mm)	Weight (lbs)	Weight (g)
IA0090614		¼	¼	Male BSPT	4	1.34	0.51	-	0.63	34.00	13.00	-	16.00	0.07	32.00
IA0090638		¾	¾	Male BSPT	4	1.42	0.59	-	0.67	36.00	15.00	-	17.00	0.09	41.00
IA0090612		½	½	Male BSPT	4	1.57	0.67	-	0.91	40.00	17.00	-	23.00	0.12	56.00
IA0090714		¼	¼	Female BSPP	5	1.97	-	-	0.67	50.00	-	-	17.00	0.08	38.00
IA0090738		¾	¾	Female BSPP	5	1.97	-	-	0.83	50.00	-	-	21.00	0.11	49.00
IA0090712	¾	½	½	Female BSPP	5	2.09	-	-	1.02	53.00	-	-	26.00	0.15	69.00
IA0090978		-	7 mm	Hose Tail	6	1.30	1.02	0.63	-	33.00	26.00	16.00	-	0.07	30.00
IA0090989		-	8 mm	Hose Tail	6	1.30	1.02	0.63	-	33.00	26.00	16.00	-	0.07	30.00
IA0090990		-	9 mm	Hose Tail	6	1.30	1.02	0.63	-	33.00	26.00	16.00	-	0.07	31.00
IA0090901		-	10 mm	Hose Tail	6	1.30	1.02	0.63	-	33.00	26.00	16.00	-	0.07	32.00
IA0090912		-	11-12 mm	Hose Tail	6	1.30	1.22	0.63	-	33.00	31.00	16.00	-	0.08	38.00

To obtain connected length of coupling add dimensions A or A+C (Fig. 1, 2, 3) and D or D+E (Fig. 4, 5, 6) together and subtract 25,6 mm (1 in.).

\*Alternative end connections available upon request.

AGRICULTURE

REFRIGERANT

# Safeline Series

## ISO 6150 C GD18500/GK18600



Eaton's Safeline Series is an Industrial Interchange pneumatic coupling with push button safety feature designed for use with compressed air. Two-step disconnect procedure shuts off air supply and releases downstream air pressure before plug can be removed from socket/female, which prevents hose whip.

### Product Features

- Safe and easy to connect and disconnect
- Light weight, compact ergonomic design
- Meets Safety Standard ISO 4414
- Meets ISO 6150 Series C Standard
- Standard body material: Dural
- Standard seal material: Buna-N

### Physical Characteristics

Body Size	Nominal Flow Diameter (mm)	Max. Operating Pressure Connected or Disconnected		Air Flow Rate* $\Delta p$ 0.6 bar/8.7 psi**		$\Delta p$ 1 bar/14.5 psi***		Working Temperature	
		(bar)	(psi)	(lpm)	(gpm)	(lpm)	(gpm)	°C	°F
1/4	5.5	16	232	515	136	650	172	-20° +100°	-4° +212°

\*Indicated values refer to an inlet pressure of 6 bar / 87 psi.

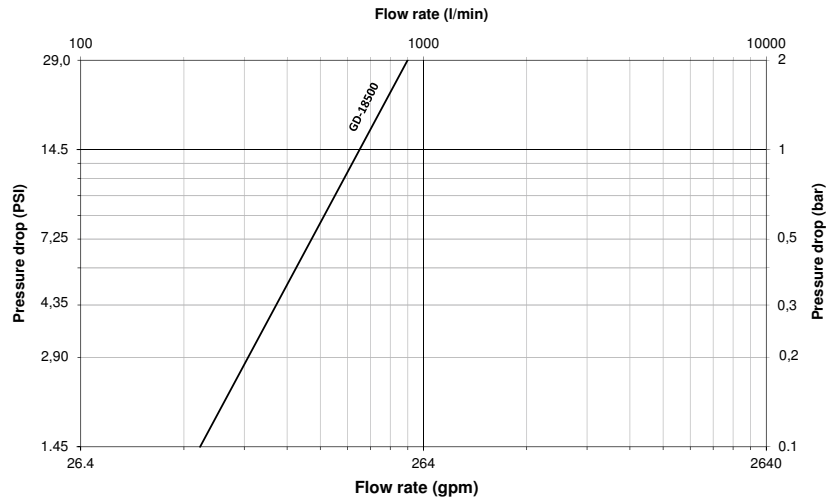
\*\*This flow rate allows the optimum output from a pneumatic tool.

\*\*\* This flow rate is the maximum recommended for a suitable output from a pneumatic tool. For applications needing higher flow rates, it is recommended to select a larger size coupling.

### Applications & Markets

- General Pneumatics
- Air Tools
- Industrial Plants
- Maintenance and Repair

### Flow Data



Air flow-rate at 6 bar (87 psi)



# Safeline Series

## ISO 6150 C GD18500/GK18600

FLUID TRANSFER  
AND HYDRAULIC

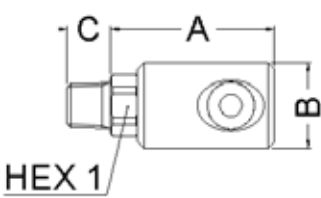


Figure 1

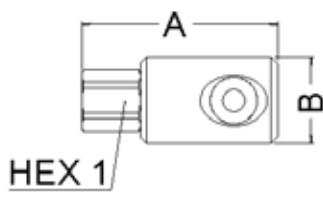


Figure 2

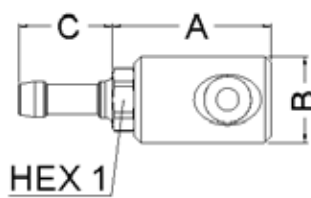


Figure 3

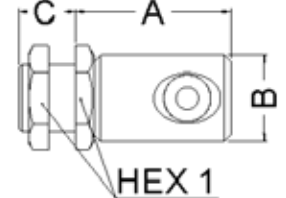


Figure 4

### Sockets (Female)

Part Number	Body Size	Port Size	Thread or Hose Diam.	Type	Fig.	Dimensions									Weight	
						A	B	C	Hex1	A	B	C	Hex1	(lbs)	(g)	
						(in)	(in)	(in)	(in)	(mm)	(mm)	(mm)	(mm)			
GD1853615		¼	¼	Male BSPP	1	1.85	1.02	0.47	0.75	47	26	12	19	0.17	77	
GD1853614		¼	¼	Male BSPT	1	1.93	1.02	0.51	0.67	49	26	13	17	0.17	76	
GD1853639		¾	¾	Male BSPP	1	1.89	1.02	0.47	0.87	48	26	12	22	0.20	91	
GD1853638		¾	¾	Male BSPT	1	1.93	1.02	0.57	0.67	49	26	14.5	17	0.19	84	
GD1853613		½	½	Male BSPP	1	1.97	1.02	0.55	1.06	50	26	14	27	0.25	115	
GD1853612		½	½	Male BSPT	1	1.89	1.02	0.67	0.87	48	26	17	22	0.27	123	
GD1852614		¼	¼	Female BSPP	2	2.30	1.02		0.67	58.5	26	-	17	0.17	76	
GD1852638	¼	¾	¾	Female BSPP	2	2.42	1.02		0.87	61.5	26	-	22	0.22	99	
GD1852612		½	½	Female BSPP	2	2.58	1.02		1.06	65.5	26	-	27	0.27	122	
GD1855667		-	6 mm	Hose Tail	3	1.87	1.02	1.10	0.67	47.5	26	28	17	0.16	73	
GD1855678		-	7 mm	Hose Tail	3	1.87	1.02	1.10	0.67	47.5	26	28	17	0.16	74	
GD1855689		-	8 mm	Hose Tail	3	1.87	1.02	1.10	0.67	47.5	26	28	17	0.16	74	
GD1855690		-	9 mm	Hose Tail	3	1.87	1.02	1.10	0.67	47.5	26	28	17	0.17	75	
GD1855601		-	10 mm	Hose Tail	3	1.87	1.02	1.10	0.67	47.5	26	28	17	0.17	79	
GD1855613		-	13 mm	Hose Tail	3	1.87	1.02	1.30	0.67	47.5	26	33	17	0.19	87	
GD1855014		¼	¼	Female BSPP, Bulkhead*	4	1.83	1.02	0.67	1.06	46.5	26	17	27	0.25	112	
GD1855038		¾	¾	Female BSPP, Bulkhead**	4	1.87	1.02	0.79	1.26	47.5	26	20	32	0.33	150	

To obtain connected length of coupling add Dimensions A or A+C (Fig. 1, 2, 3, 4) and D or D+E (Fig. 5, 6, 7) together and subtract 26 mm (1,02 in).

\*Max bulkhead thickness: 10 mm (0,39 in) / Bulkhead hole diameter = 21 mm (0,83 in).

\*\*Max bulkhead thickness: 12 mm (0,47 in) / Bulkhead hole diameter = 25 mm (0,98 in).

SPECIAL APPLICATIONS

DIAGNOSTIC

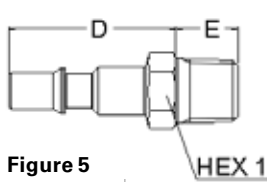


Figure 5

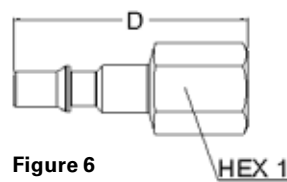


Figure 6

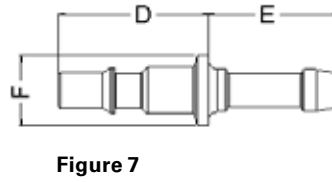


Figure 7

### Plugs (Male)

Part Number	Body Size	Port Size	Thread or Hose Diam.	Type	Fig.	Dimensions									Weight		
						D	E	F	Hex1	Hex2	D	E	F	Hex1	Hex2	(lbs)	(g)
						(in)	(in)	(in)	(in)	(in)	(mm)	(mm)	(mm)	(mm)	(mm)		
GK1866319		½	½	Male BSPP	5	1.38	0.31		0.55		35	8		14		0.04	17
GK1866318		½	½	Male BSPT	5	1.34	0.31		0.47		34	8		12		0.03	14
GK1866381		½	½	Male NPT	5	1.34	0.39		0.47		34	10		12		0.03	15
GK1866315		¼	¼	Male BSPP	5	1.42	0.47		0.67		36	12		17		0.06	25
GK1866314		¼	¼	Male BSPT	5	1.40	0.51		0.55		35.5	13		14		0.05	23
GK1866341		¼	¼	Male NPT	5	1.42	0.59		0.67		36	15		17		0.07	30
GK1866339		¾	¾	Male BSPP	5	1.46	0.47		0.87		37	12		22		0.09	39
GK1866338		¾	¾	Male BSPT	5	1.48	0.47		0.75		37.5	12		19		0.08	37
GK1866218		½	½	Female BSPP	6	1.63			0.55		41.5			14		0.04	18
GK1866281	¼	½	½	Female NPT	6	0.00			0.00							0.04	18
GK1866214		¼	¼	Female BSPP	6	1.97			0.67		50			17		0.07	33
GK1866241		¼	¼	Female NPT	6	1.97			0.67		50			17		0.07	32
GK1866238		¾	¾	Female BSPP	6	1.85			0.83		47			21		0.08	35
GK1866245		M 14	M 14 x 125	Female Metric	6	1.87			0.67		47.5			17		0.06	26
GK1866767		-	6 mm	Hose Tail	7	1.26	1.10	0.59			32	28	15			0.03	15
GK1866778		-	7 mm	Hose Tail	7	1.26	1.10	0.59			32	28	15			0.04	18
GK1866789		-	8 mm	Hose Tail	7	1.26	1.10	0.59			32	28	15			0.04	19
GK1866790		-	9 mm	Hose Tail	7	1.26	1.10	0.59			32	28	15			0.04	19
GK1866701		-	10 mm	Hose Tail	7	1.26	1.10	0.59			32	28	15			0.04	20
GK1866713		-	13 mm	Hose Tail	7	1.26	1.30	0.79			32	33	20			0.08	34

To obtain connected length of coupling add Dimensions A or A+C (Fig. 1, 2, 3, 4) and D or D+E (Fig. 5, 6, 7) together and subtract 26 mm (1,02 in).

AGRICULTURE

REFRIGERANT

# Safeline Series

## ISO 6150 C ID18900/IK18900



Eaton's Safeline Series is an Industrial Interchange pneumatic coupling with push button safety feature designed for use with compressed air. Two-step disconnect procedure shuts off air supply and releases downstream air pressure before plug can be removed from socket/female, which prevents hose whip.

### Product Features

- Safe and easy to connect and disconnect
- Light weight, compact ergonomic design
- Meets Safety Standard ISO 4414
- Meets ISO 6150 Series C Standard
- Standard body material: Dural
- Standard seal material: Buna-N

### Physical Characteristics

Body Size	Nominal Flow Diameter (mm)	Max. Operating Pressure Connected or Disconnected		Air Flow Rate* Δp 0.6 bar/8.7 psi**		Air Flow Rate*** Δp 1 bar/14.5 psi***		Working Temperature	
		(bar)	(psi)	(lpm)	(gpm)	(lpm)	(gpm)	°C	°F
3/8	8	16	232	1,080	285	1,350	356	-20° +100°	-4° +212°

\*Indicated values refer to an inlet pressure of 6 bar / 87 psi.

\*\*This flow rate allows the optimum output from a pneumatic tool.

\*\*\* This flow rate is the maximum recommended for a suitable output from a pneumatic tool. For applications needing higher flow rates, it is recommended to select a larger size coupling.

### Applications & Markets

- General Pneumatics
- Air Tools
- Industrial Plants
- Maintenance and Repair

### Flow Data



# Safeline Series

## ISO 6150 C ID18900/IK18900

FLUID TRANSFER  
AND HYDRAULIC

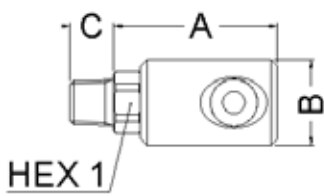


Figure 1

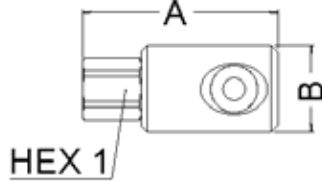


Figure 2

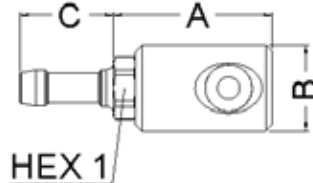


Figure 3

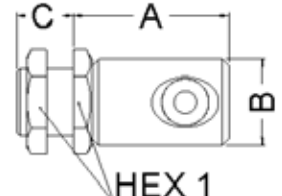


Figure 4

### Sockets (Female)

Part Number	Body Size	Port Size	Thread or Hose Diam. Type	Fig.	Dimensions										
					A (in)	B (in)	C (in)	Hex1 (in)	A (mm)	B (mm)	C (mm)	Hex1 (mm)	Weight (lbs)	Weight (g)	
ID1896015		¼	¼	Male BSPP	1	2.45	1.34	0.47	0.87	62	34	12	22	0.35	160
ID1896014		¼	¼	Male BSPT	1	2.45	1.34	0.51	0.87	62	34	13	22	0.36	162
ID1896039		¾	¾	Male BSPP	1	2.45	1.34	0.47	0.87	62	34	12	22	0.36	165
ID1896038		¾	¾	Male BSPT	1	2.45	1.34	0.59	0.87	62	34	15	22	0.37	168
ID1896013		½	½	Male BSPP	1	2.45	1.34	0.55	1.06	62	34	14	27	0.37	168
ID1896012		½	½	Male BSPT	1	2.45	1.34	0.67	0.87	62	34	17	22	0.40	180
ID1897014		¼	¼	Female BSPP	2	2.92	1.34	-	0.87	74	34	-	22	0.40	182
ID1897038	¾	¾	¾	Female BSPP	2	3.02	1.34	-	0.87	77	34	-	22	0.40	180
ID1897012		½	½	Female BSPP	2	3.16	1.34	-	1.06	80	34	-	27	0.48	216
ID1895689		-	8 mm	Hose Tail	3	2.49	1.34	1.10	0.87	63	34	28	22	0.36	165
ID1895690		-	9 mm	Hose Tail	3	2.49	1.34	1.10	0.87	63	34	28	22	0.35	160
ID1895601		-	10 mm	Hose Tail	3	2.49	1.34	1.10	0.87	63	34	28	22	0.37	166
ID1895613		-	13 mm	Hose Tail	3	2.49	1.34	1.30	0.87	63	34	33	22	0.39	177
ID1895038		¾	¾	Female BSPP, Bulkhead*	4	2.37	1.34	0.79	1.26	60	34	20	32	0.52	235
ID1895012		½	¾	Female BSPP, Bulkhead**	4	2.39	1.34	0.91	1.38	61	34	23	35	0.59	269

To obtain connected length of coupling add Dimensions A or A+C (Fig. 1, 2, 3, 4) and D or D+E (Fig. 5, 6, 7) together and subtract 40 mm (1,57 in).

\*Max bulkhead thickness: 12 mm (0,47 in) / Bulkhead hole diameter = 25 mm (0,98 in)

\*\*Max bulkhead thickness: 15 mm (0,59 in) / Bulkhead hole diameter = 31 mm (1,22 in)

PNEUMATIC

SPECIAL APPLICATIONS

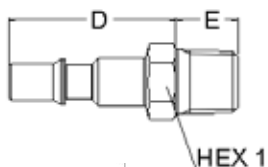


Figure 5

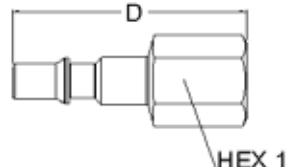


Figure 6

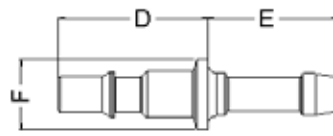


Figure 7

### Plugs (Male)

Part Number	Body Size	Port Size	Thread or Hose Diam. Type	Fig.	Dimensions										
					D (in)	E (in)	F (in)	Hex1 (in)	D (mm)	E (mm)	F (mm)	Hex1 (mm)	Weight (lbs)	Weight (g)	
IK1890615		¼	¼	Male BSPP	5	1.81	0.47	0.75	0.75	46	12	-	19	0.10	44
IK1890614		¼	¼	Male BSPT	5	1.77	0.51	0.67	0.67	45	13	-	17	0.08	38
IK1890641		¼	¼	Male NPT	5	1.77	0.51	0.67	0.67	45	13	-	17	0.09	39
IK1890639		¾	¾	Male BSPP	5	1.81	0.47	0.87	0.87	46	12	-	22	0.11	51
IK1890638		¾	¾	Male BSPT	5	1.77	0.59	0.75	0.75	45	15	-	19	0.11	51
IK1890683		¾	¾	Male NPT	5	1.77	0.59	0.75	0.75	45	15	-	19	0.11	52
IK1890613		½	½	Male BSPP	5	1.81	0.55	1.02	1.02	46	14	-	26	0.16	73
IK1890612	¾	½	½	Male BSPT	5	1.77	0.67	0.87	0.87	45	17	-	22	0.15	66
IK1890714		¼	¼	Female BSPP	6	2.36	-	0.67	0.67	60	-	-	17	0.09	40
IK1890741		¼	¼	Female NPT	6	2.36	-	0.67	0.67	60	-	-	17	0.09	40
IK1890738		¾	¾	Female BSPP	6	2.36	-	0.83	0.83	60	-	-	21	0.11	52
IK1890783		¾	¾	Female NPT	6	2.36	-	0.83	0.83	60	-	-	21	0.12	55
IK1890712		½	½	Female BSPP	6	2.36	-	1.02	1.02	60	-	-	26	0.15	66
IK1890989		-	8 mm	Hose Tail	7	1.65	1.10	0.63	0.63	42	28	16	-	0.07	33
IK1890990		-	9 mm	Hose Tail	7	1.65	1.10	0.63	0.63	42	28	16	-	0.07	33
IK1890901		-	10 mm	Hose Tail	7	1.65	1.10	0.63	0.63	42	28	16	-	0.08	35
IK1890913		-	13 mm	Hose Tail	7	1.65	1.30	0.79	0.79	42	33	20	-	0.10	46

To obtain connected length of coupling add Dimensions A or A+C (Fig. 1, 2, 3, 4) and D or D+E (Fig. 5, 6, 7) together and subtract 40 mm (1,57 in).

AGRICULTURE

REFRIGERANT

# Safeline Series

## ISO 6150 C TD18300/TK18300



Eaton's Safeline Series is an Industrial Interchange pneumatic coupling with push button safety feature designed for use with compressed air. Two-step disconnect procedure shuts off air supply and releases downstream air pressure before plug can be removed from socket/female, which prevents hose whip.

### Product Features

- Safe and easy to connect and disconnect
- Light weight, compact ergonomic design
- Meets Safety Standard ISO 4414
- Meets ISO 6150 Series C Standard
- Standard body material: Dural
- Standard seal material: Buna-N

### Physical Characteristics

Body Size	Nominal Flow Diameter (mm)	Max. Operating Pressure Connected or Disconnected		Air Flow Rate* $\Delta p$ 0.6 bar/8.7 psi**		$\Delta p$ 1 bar/14.5 psi***		Working Temperature	
		(bar)	(psi)	(lpm)	(gpm)	(lpm)	(gpm)	°C	°F
1/2	11	16	232	2,400	634	3,000	793	-20° +100°	-4° +212°

\*Indicated values refer to an inlet pressure of 6 bar / 87 psi.

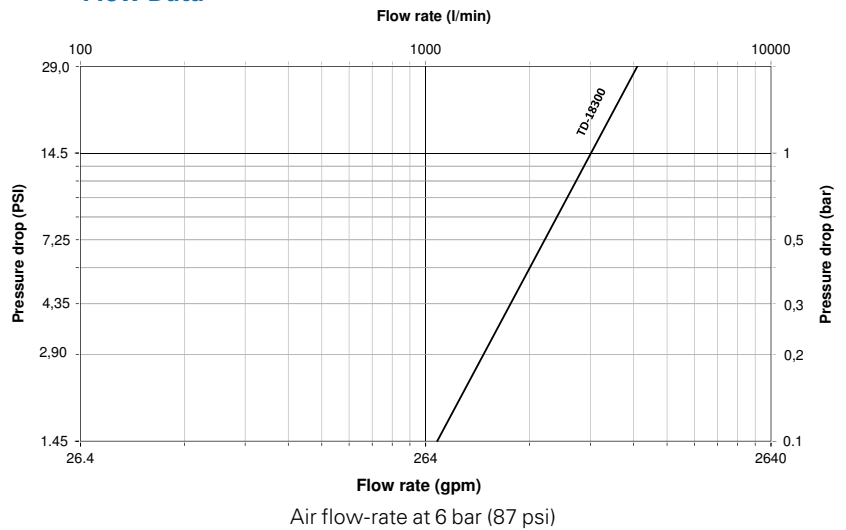
\*\*This flow rate allows the optimum output from a pneumatic tool.

\*\*\* This flow rate is the maximum recommended for a suitable output from a pneumatic tool. For applications needing higher flow rates, it is recommended to select a larger size coupling.

### Applications & Markets

- General Pneumatics
- Air Tools
- Industrial Plants
- Maintenance and Repair

### Flow Data



# Safeline Series

## ISO 6150 C TD18300/TK18300

FLUID TRANSFER  
AND HYDRAULIC

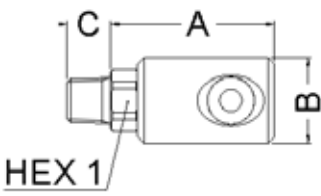


Figure 1

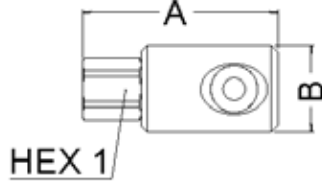


Figure 2

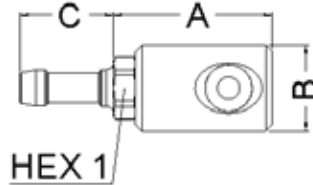


Figure 3

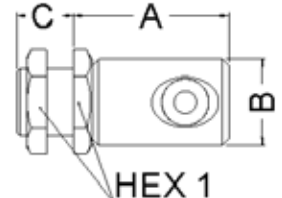


Figure 4

### Sockets (Female)

Part Number	Body Size	Port Size	Thread or Hose Diam. Type	Fig.	Dimensions										Weight		
					A (in)	B (in)	C (in)	Hex1 (in)	Hex2 (in)	A (mm)	B (mm)	C (mm)	Hex1 (mm)	Hex2 (mm)	(lbs)	(g)	
TD1832012		1/2	1/2	Male BSPT	1	2.78	1.56	0.67	1.06		70.6	39.5	17	27		0.58	262
TD1832034		3/4	3/4	Male BSPT	1	2.78	1.56	0.73	1.14		70.6	39.5	19	29		0.63	287
TD1832138		3/8	3/8	Female BSPP	2	3.27	1.56	1.06			83.1	39.5	-	27		0.62	280
TD1832112		1/2	1/2	Female BSPP	2	3.27	1.56	1.06			83.1	39.5	-	27		0.58	261
TD1832134	1/4	3/4	3/4	Female BSPP	2	3.51	1.56	1.26			89.1	39.5	-	32		0.67	304
TD1835601		-	10 mm	Hose Tail	3	2.84	1.56	1.10	1.06		72.1	39.5	28	27		0.56	256
TD1835613		-	13 mm	Hose Tail	3	2.84	1.56	1.30	1.06		72.1	39.5	33	27		0.59	267
TD1835616		-	16 mm	Hose Tail	3	2.84	1.56	1.30	1.06		72.1	39.5	33	27		0.60	270
TD1835012		1/2	1/2	Female BSPP, Bulkhead*	4	2.78	1.56	0.91	1.38		70.6	39.5	23	35		0.76	343
TD1835034		3/4	3/4	Female BSPP, Bulkhead**	4	2.82	1.56	0.98	1.50		71.6	39.5	25	38		0.77	350

To obtain connected length of coupling add Dimensions A or A+C (Fig. 1, 2, 3, 4) and D or D+E (Fig. 5, 6, 7) together and subtract 20 mm (0,79 in).

\*Max bulkhead thickness: 15 mm (0,59 in) / Bulkhead hole diameter = 31 mm (1,22 in)

\*\*Max bulkhead thickness: 16 mm (0,63 in) / Bulkhead hole diameter = 33 mm (1,30 in)

PNEUMATIC

SPECIAL APPLICATIONS

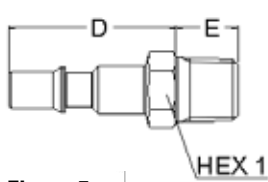


Figure 5

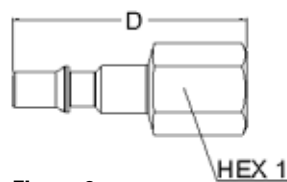


Figure 6

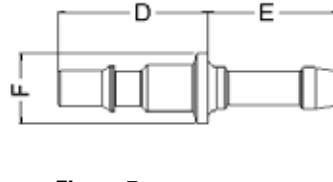


Figure 7

### Plugs (Male)

Part Number	Body Size	Port Size	Thread or Hose Diam. Type	Fig.	Dimensions							Weight			
					D (in)	E (in)	F (in)	Hex1 (in)	D (mm)	E (mm)	F (mm)	Hex1 (mm)	(lbs)	(g)	
TK1831539		3/8	3/8	Male BSPP	5	2.01	0.47		0.87	51.1	11.9		22	2.32	59
TK1831512		1/2	1/2	Male BSPT	5	1.97	0.67		0.87	50	17		22	2.56	65
TK1831534		3/4	3/4	Male BSPT	5	2.11	0.73		1.14	53.5	18.5		29	3.86	98
TK1831638		3/8	3/8	Female BSPP	6	2.56			1.02	65			26	3.70	94
TK1831612	1/4	1/2	1/2	Female BSPP	6	2.56			1.02	65			26	3.02	77
TK1831634		3/4	3/4	Female BSPP	6	2.87			1.26	73			32	5.02	128
TK1831889		-	8 mm	Hose Tail	7	1.85	1.10	0.79		47	28	20		1.87	48
TK1831801		-	10 mm	Hose Tail	7	1.85	1.10	0.79		47	28	20		1.91	48
TK1831813		-	13 mm	Hose Tail	7	1.85	1.30	0.79		47	33	20		2.19	56
TK1831816		-	16 mm	Hose Tail	7	1.85	1.30	0.79		47	33	20		2.40	61

To obtain connected length of coupling add Dimensions A or A+C (Fig. 1, 2, 3, 4) and D or D+E (Fig. 5, 6, 7) together and subtract 20 mm (0,79 in).

DIAGNOSTIC

AGRICULTURE

REFRIGERANT



King Comercial Ltda  
Distribuidor Brasil  
Fones:(19) 3267 9611 / 32693828  
king.vendas@yahoo.com.br  
kingvendas@kingcomercial.com.br  
www.kingcomercial.com.br

Eaton  
Hydraulics Group USA  
14615 Lone Oak Road  
Eden Prairie, MN 55344  
USA  
Tel: 952-937-9800  
Fax: 952-294-7722  
www.eaton.com/hydraulics

Eaton  
Hydraulics Group Europe  
Route de la Longeraie 7  
1110 Morges  
Switzerland  
Tel: +41 (0) 21 811 4600  
Fax: +41 (0) 21 811 4601

Eaton  
Hydraulics Group Asia Pacific  
Eaton Building  
No.7 Lane 280 Linhong Road  
Changning District,  
Shanghai 200335  
China  
Tel: (+86 21) 5200 0099  
Fax: (+86 21) 2230 7240



© 2015 Eaton  
All Rights Reserved  
Printed in USA  
Document No. E-MEQD-CC002-E2  
December 2015

**KING COMERCIAL LTDA**  
*Um nome carregado de soluções*